



ASINTOTO

Davide Groppi / 2023

Abstraction, purity, graphic sign.
The projected reduction of Infinito.
The disc appears enigmatic, the symbolic presence of the absence of light.

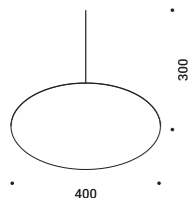
Astrazione, purezza, segno grafico.
La riduzione puntuale di Infinito.
Il disco appare enigmatico, presenza simbolica dell'assenza della luce.

Ceiling / Indirect / Indoor

Material Metal - Methacrylate

Finish .27 Gravity Black

Note Ceiling luminaire. Disc with gravity black finish. Magnetic weight available for disc tilting. Black cable. *Apparecchio illuminante da soffitto. Disco con finitura gravity black. Disponibile un peso magnetico per l'orientamento inclinato del disco. Cavo nero.*



ASINTOTO

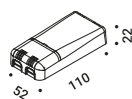
18W
 Max 500mA DC
 2700K - 1435lm / 3000K - 1478lm
 CRI >90
 Driver not included
 CE IP20

Gravity Black - 2700K
 Gravity Black - 3000K

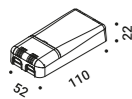
1A4072700.27.20
 1A4072700.30.20

Compulsory accessories / Accessori obbligatori

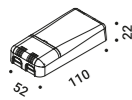
Drivers / Alimentatori



| Driver / Alimentatore | | | Not included |
|-----------------------|--------------------------|---------------|--------------|
| 220-240V(100-127V) | 500mA/20W(15W)/IP20/DALI | 1Z0241180.500 | |



| Driver / Alimentatore | | | Not included |
|-----------------------|----------------------------------|---------------|--------------|
| 220-240V(100-127V) | 500mA/20W(15W)/IP20/PUSH - 1-10V | 1Z0240870.500 | |

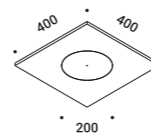


| Driver / Alimentatore | | | Not included |
|-----------------------|---------------------------|---------------|--------------|
| 220-240V | 500mA/20W/IP20/TRIAC/IGBT | 1Z0240850.500 | |

The sizes are expressed in millimeters.

Optional accessories / Accessori opzionali

Installation kits / Kit d'installazione



| Circular plasterboard panel 12,5 mm / Botola circolare per cartongesso 12,5 mm | | | Not included |
|--|---|-----------------|--------------|
| Standard | Cut-out 400x400 mm Minimum space for mounting Ø 115 mm | 1A4520000.00.00 | |

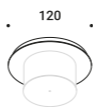
Suspension kits / Kit di sospensione



| Recessed suspension kit for 12,5 mm plasterboard / Kit di sospensione da incasso per cartongesso 12,5 mm | | | Not included |
|--|---|-----------------|--------------|
| Matt White | For electrical cables - 1 Piece Plasterboard cut-out Ø 44 mm Minimum space for mounting 70 mm | 1X0000300.04.00 | |
| Matt Black | For electrical cables - 1 Piece Plasterboard cut-out Ø 44 mm Minimum space for mounting 70 mm | 1X0000400.04.00 | |



| Ceiling suspension kit / Kit di sospensione da soffitto | | | Not included |
|---|---------------------------------|-----------------|--------------|
| Matt White | For electrical cables - 1 Piece | 1X0010300.04.00 | |
| Matt Black | For electrical cables - 1 Piece | 1X0010400.04.00 | |



| Wall adapter plate / Piastra di adattamento da parete | | | Not included |
|---|-------------------------------------|-----------------|--------------|
| Matt White | For mounting on brick masonry walls | 1X0050300.01.00 | |

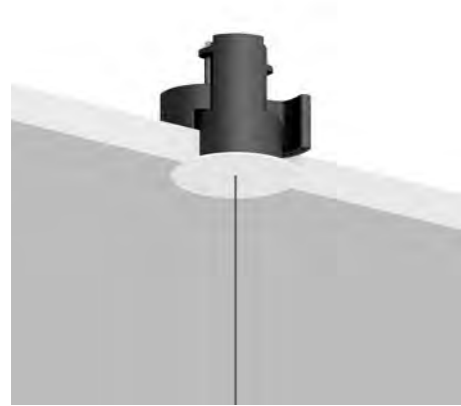
Other accessories / Altri accessori



| Magnetic weight / Peso magnetico | | | Not included |
|----------------------------------|-------------------------|-----------------|--------------|
| Matt Black | For sloped installation | 1A4710400.00.00 | |

SUSPENSION KITS / KIT DI SOSPENSIONE

Recessed suspension kit / Kit di sospensione da incasso



Suspension kit for 12,5 mm plasterboard
Plasterboard cut-out Ø 44 mm
Minimum space for mounting 70 mm

Kit di sospensione per cartongesso 12,5 mm
Dimensioni taglio cartongesso Ø 44 mm
Spazio minimo per incasso 70 mm

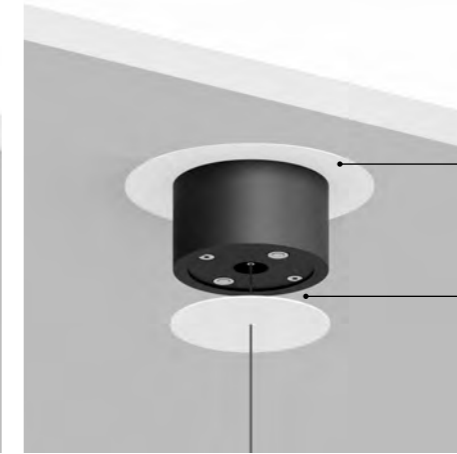
Magnetic fixing
Fissaggio magnetico



| Version | Use | Product reference | Finish | Code |
|----------------------------|-----------------------|-------------------|------------|-----------------|
| Recessed suspension kit.01 | For suspension cables | REFLEX S 1 | Matt White | 1X0000300.01.00 |
| | | REFLEX S 2 | | |
| | | SHANGHAI 1 | | |
| | | SHANGHAI 2 | Matt Black | |
| | | SOTTILE 1 | | |
| | | SOTTILE 1 DE | | |
| Recessed suspension kit.02 | For electrical cables | MAGIA | Matt White | 1X0000300.02.00 |
| | | | Matt Black | 1X0000400.02.00 |
| Recessed suspension kit.03 | For suspension cables | MASAI 1 | Matt White | 1X0000300.03.00 |
| | | MASAI 2 | Matt Black | 1X0000400.03.00 |
| | | SPY DE | | |
| Recessed suspension kit.04 | For electrical cables | ASINTOTO | Matt White | 1X0000300.04.00 |
| | | REFLEX S 2 | Matt Black | 1X0000400.04.00 |
| | | SHANGHAI 2 | | |
| Recessed suspension kit.05 | For electrical cables | LOUIS XIV 2 | Matt White | 1X0000300.05.00 |
| | | SOTTOSOPRA 2 | Matt Black | 1X0000400.05.00 |

SUSPENSION KITS / KIT DI SOSPENSIONE

Ceiling suspension kit / Kit di sospensione da soffitto



Back plate for masonry ceilings
Back plate per soffitti in muratura

Magnetic fixing
Fissaggio magnetico



| Version | Use | Product reference | Finish | Code |
|---------------------------|-----------------------|-------------------|------------|-----------------|
| Ceiling suspension kit.01 | For suspension cables | REFLEX S 1 | Matt White | 1X0010300.01.00 |
| | | REFLEX S 2 | | |
| | | SHANGHAI 1 | | |
| | | SHANGHAI 2 | Matt Black | |
| | | SOTTILE 1 | | |
| | | SOTTILE 1 DE | | |
| Ceiling suspension kit.02 | For electrical cables | MAGIA | Matt White | 1X0010300.02.00 |
| | | | Matt Black | 1X0010400.02.00 |
| Ceiling suspension kit.03 | For suspension cables | MASAI 1 | Matt White | 1X0010300.03.00 |
| | | MASAI 2 | Matt Black | 1X0010400.03.00 |
| | | SPY DE | | |
| Ceiling suspension kit.04 | For electrical cables | ASINTOTO | Matt White | 1X0010300.04.00 |
| | | REFLEX S 2 | Matt Black | 1X0010400.04.00 |
| | | SHANGHAI 2 | | |
| Back plate | For masonry ceilings | | Matt White | 1X0050300.01.00 |

